

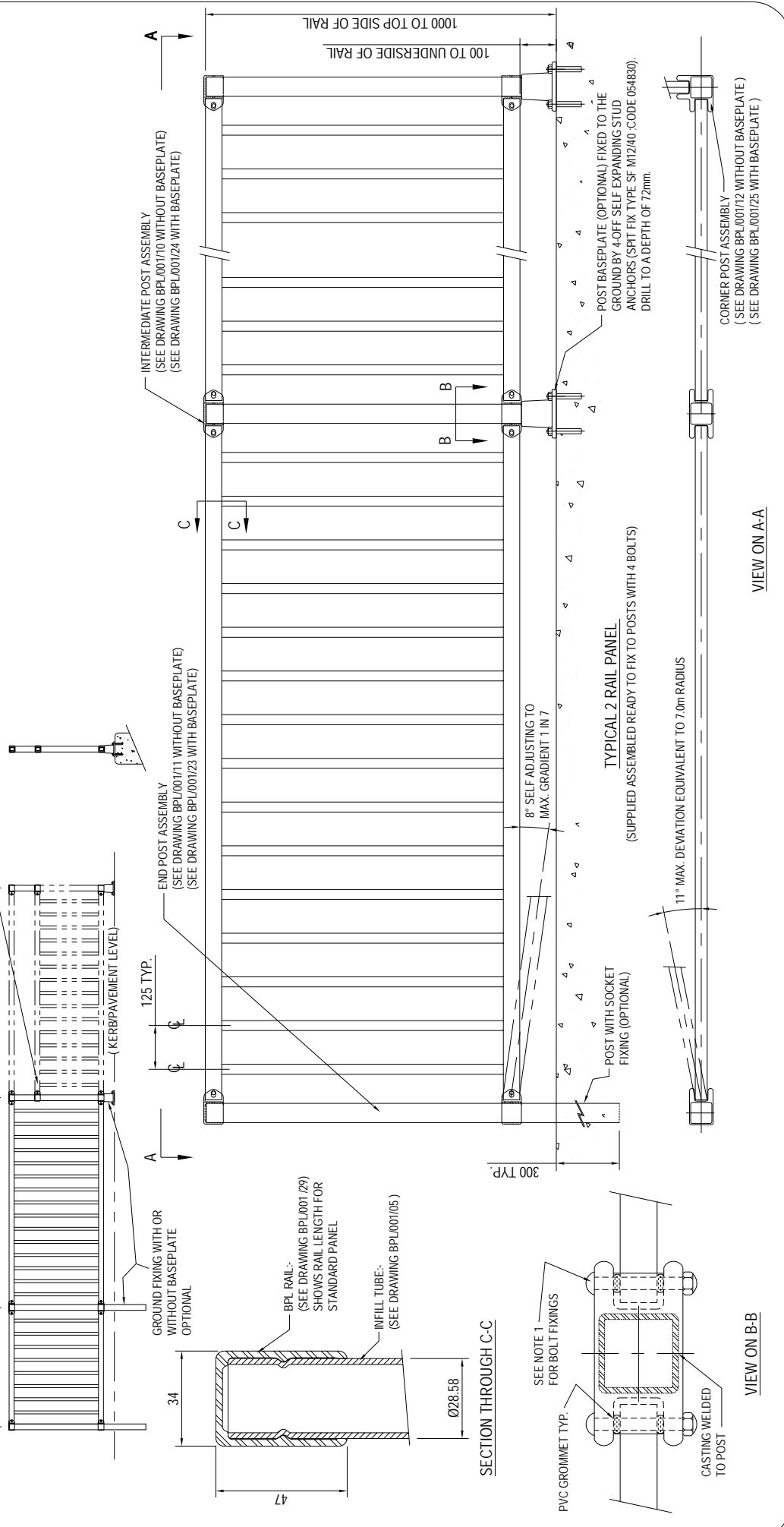
copyright note: the property of bridge parapets ltd., the this drawing is the property of bridge parapets ltd. reproduced without written permission from bridge parapets ltd.

3 RAIL PANELS CAN EASILY BE CONNECTED

2000 CTRS (3 RAIL STANDARD PANEL)

2000 CTRS (2 RAIL STANDARD PANEL)

SPECIAL LENGTH PANEL (SEE NOTE 2)



DRAWN	CM	CHECKED	DM
DATE	07/2000	SCALE	1:16

TITLE	
BPL RAIL GENERAL ARRANGEMENT (2-RAIL SYSTEM)	
DRAWING NUMBER	
BPL/001/01	

REV.	DATE	AMENDMENT
D	29-11-05	RAIL REFERENCE WAS BPL/001/17 NOW BPL/001/29. POST ASSEMBLY REFERENCES CHANGED.
C	17-10-05	BASEPLATE ADDED. INFILL TUBE DETAIL ADDED. POST ASSEMBLY REFERENCE ADDED. BORDER CHANGED. NOW WAS 606076 NOW 606376.
B	03-04-03	TEXT FORWAT ALTERED AND BORDER ALTERED
A	24-09-01	AMENDED TO SUIT MDS COMMENTS

NOTES

DESIGN :- TO BS7818 FOR DESIGN CLASS 2 (NORMAL DUTY GUARDRAIL) INFILL CLASS B.

MATERIALS :- POST & RAILS IN ALUMINIUM ALLOY 6062T6. INFILLING TUBE IN 6063T6. POST CASTINGS IN ALUMINIUM ALLOY LM6M. ALL TO BS7818 TABLE 7.

FINISH :- EXTRUSIONS - MILL FINISH. CASTINGS - AS CAST.

1) POST/RAIL BOLT FIXING TO BE Ø 10 MUSHROOM HEAD STAINLESS STEEL WITH PLAIN WASHERS AND NYLOC NUT.

2) SPECIAL LENGTH PANELS CAN BE CUT TO SIZE & FITTED ON-SITE

system & components are covered by design registration & patent applications.

BRIDGE PARAPETS LTD

TOMICH INDUSTRIAL ESTATE, MILL OF DRO, ROSSSHIRE, SCOTLAND IV5 7JA

TEL: 01329 442222 FAX: 01329 442222

E-MAIL: SALES@BRIDGE-PARAPETS.CO.UK WEB: WWW.BRIDGE-PARAPETS.CO.UK