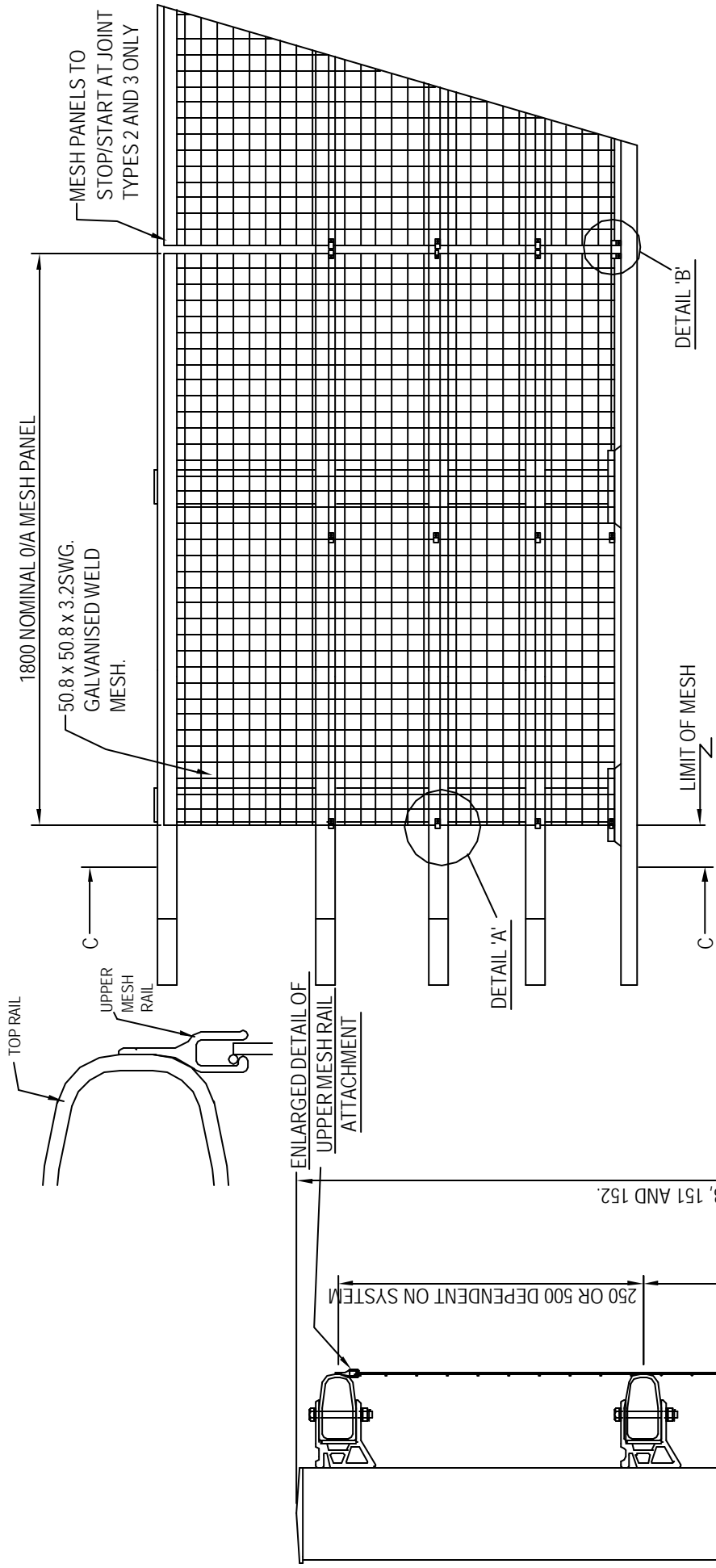
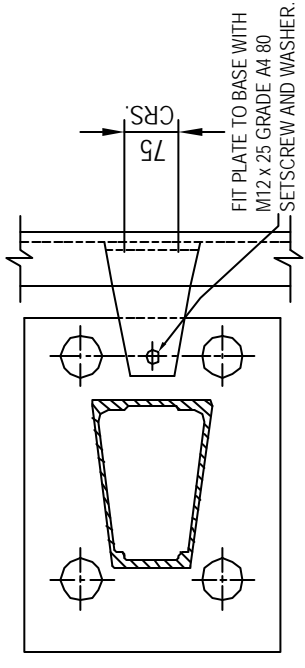


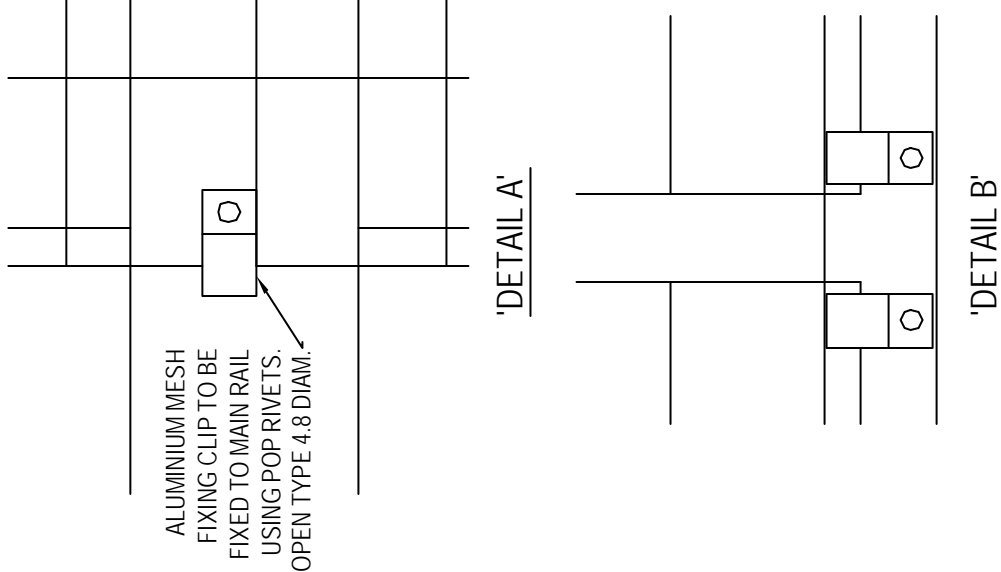
SYSTEM & COMPONENTS ARE COVERED BY DESIGN REGISTRATION & PATENT APPLICATIONS.



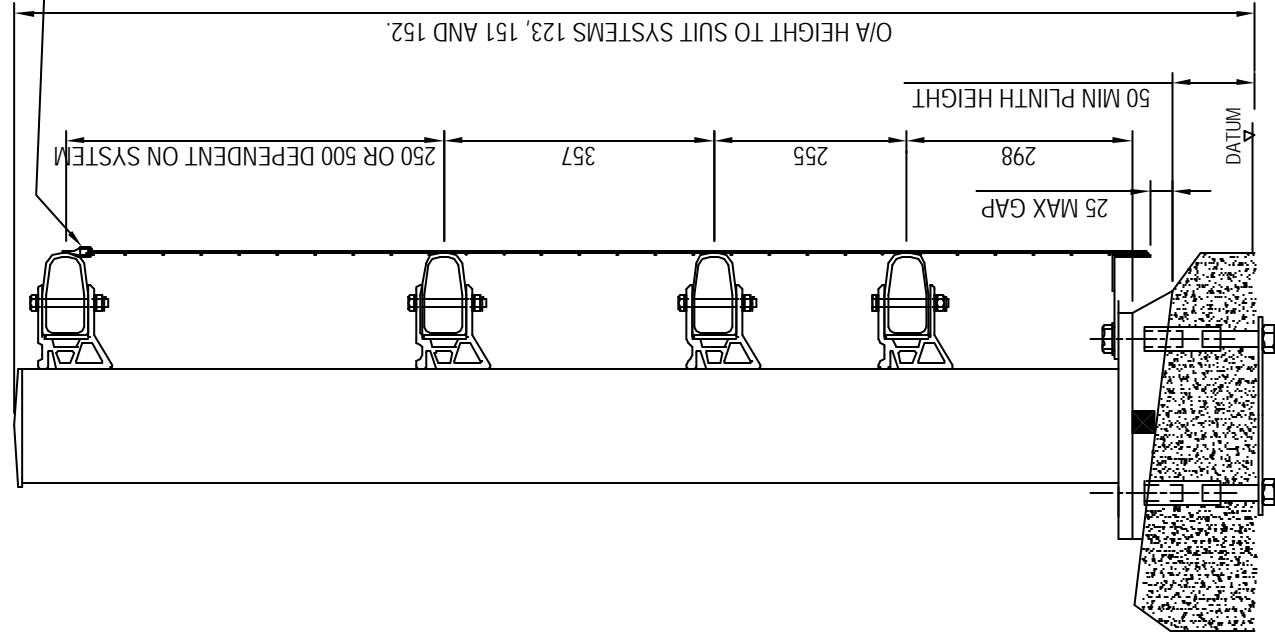
TYPICAL ELEVATION ON TRAFFIC FACE OF PARAPET



SECTION 'A-A' - BOLTS AND WASHERS OMITTED FOR CLARITY



TYPICAL SECTION THROUGH PARAPET



copyright note: this drawing is the property of bridge parapets ltd. the contents of this drawing may not be copied or reproduced without written permission from bridge parapets ltd.

NOTES

- 1) FOR DRAWING LIST SEE DRG. BPL/100/100.
- 2) FOR MATERIAL SPECIFICATION SEE DRG. BPL/100/100.
- 3) FOR FULL DETAILS OF PARAPETS SEE GENERAL ARRANGEMENT DRAWINGS.
- 4) MESH PANELS ARE TO BE MILD STEEL AND BE HOT DIP GALVANISED. ANY OTHER SURFACE FINISH TO BE DETERMINED BY THE CONTRACT.
- 5) POP RIVETS TO BE ALUMINIUM 4.8 DIAM OPEN TYPE TUCKER TAP D x REQUIRED LENGTH, OR SIMILAR APPROVED.
- 6) FOR LOWER MESH RAIL JOINT DETAIL SEE DRG. BPL/100/14.

REV.	DATE	AMENDMENT
C	05/12/02	MINOR CORRECTIONS AND CLARIFICATIONS
B	09/05/02	WELDING AMENDED. RAIL AND SPACER SECTION ALTERED.
A	28/06/01	ISSUED FOR COMMENT

BRIDGE PARAPETS LTD
 TOMNICH INDUSTRIAL ESTATE, MILL OF DRS, ROSESHIRE, BOXTON RD IV6 7UA
 TEL: +44 (0) 1463 970194 FAX: +44 (0) 1463 970667
 E-MAIL: SALES@BRIDGE-PARAPETS.COM WEB: WWW.BRIDGE-PARAPETS.COM

DRAWN	CM	CHECKED	DM
DATE	28/06/01	SCALE	VARIES

TITLE
 MESH INFILL DETAILS:
 N/1.25/M N/1.50/M,
 L/1.50/M

DRAWING NUMBER
 BPL/100/10