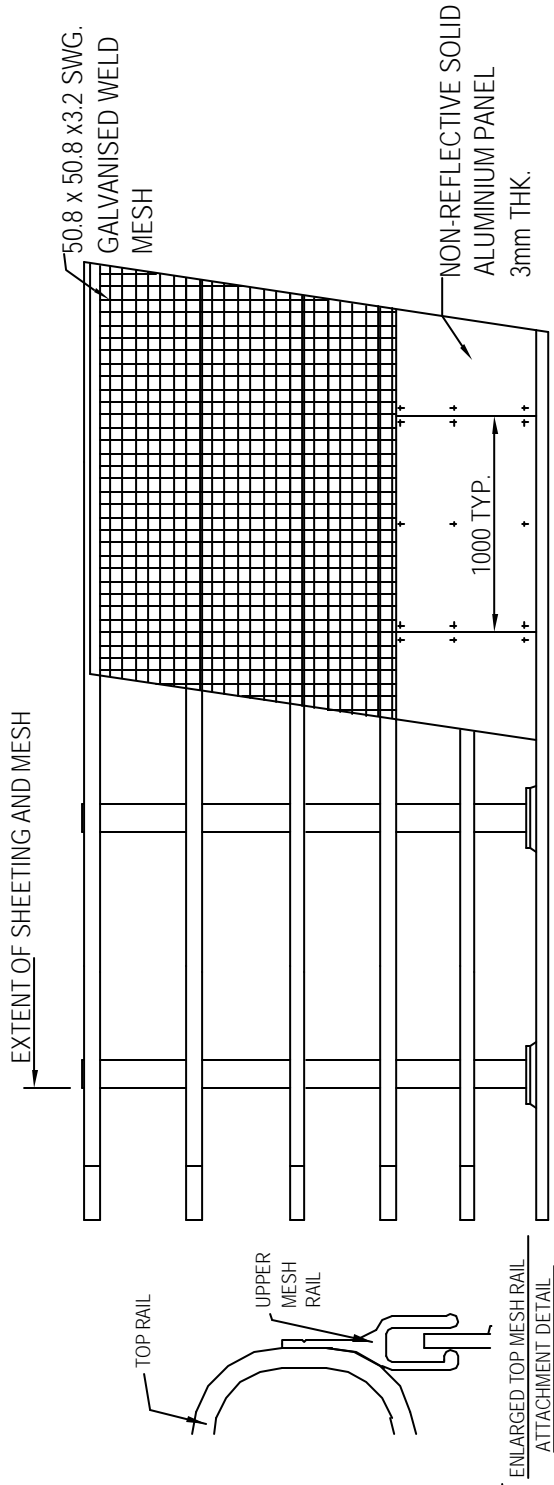
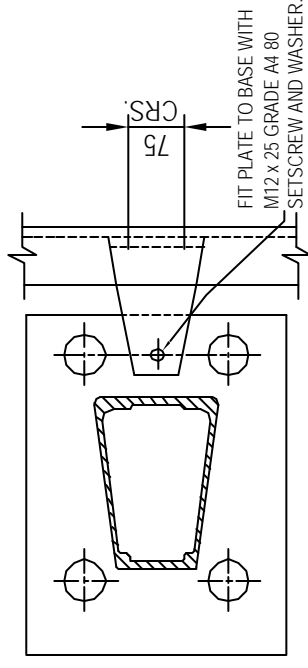


**SYSTEM & COMPONENTS ARE COVERED BY DESIGN REGISTRATION & PATENT APPLICATIONS.**

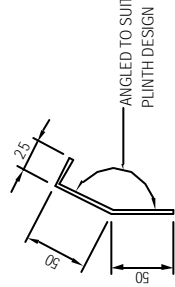


**TYPICAL FRONT ELEVATION ON TRAFFIC FACE**

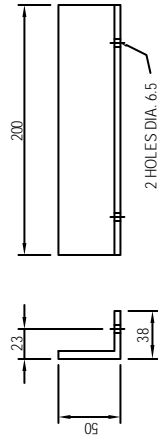
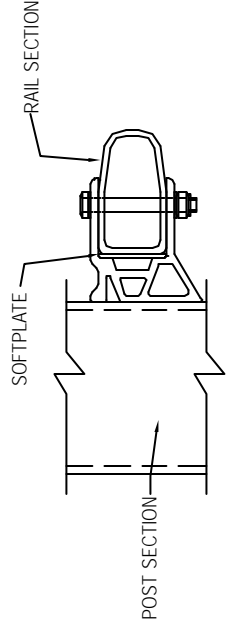
NOTE: FOR GENERAL MESH AND SOLID INFILL FIXING DETAILS SEE DRGS. BPL/100/8 AND BPL/100/11.



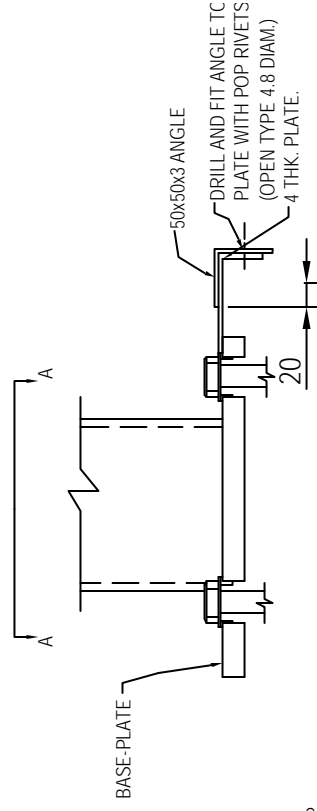
**SECTION 'A-A' - BOLTS AND WASHERS OMITTED FOR CLARITY**



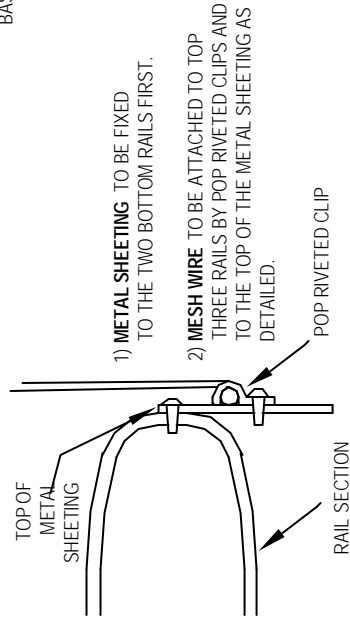
**SUPPORT ANGLE SECTION**



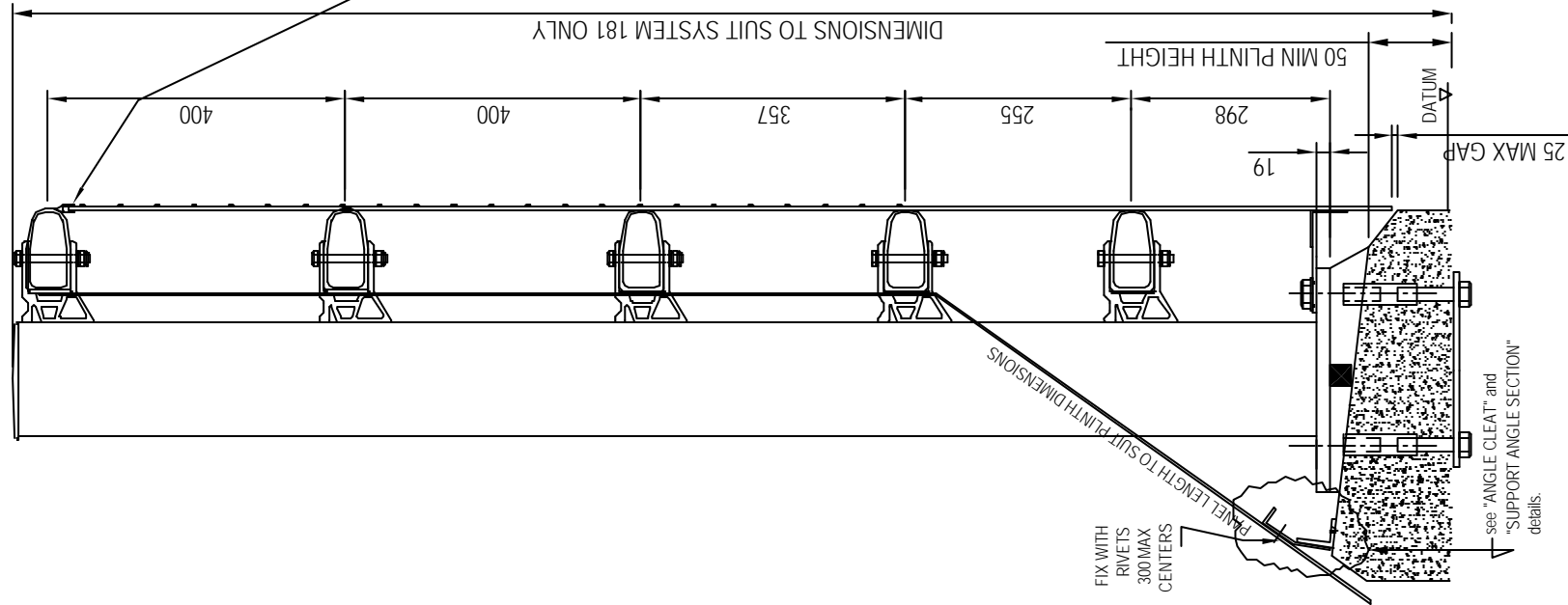
**ANGLE CLEAT**



- 1) METAL SHEETING TO BE FIXED TO THE TWO BOTTOM RAILS FIRST.
- 2) MESH WIRE TO BE ATTACHED TO TOP THREE RAILS BY POP RIVETED CLIPS AND TO THE TOP OF THE METAL SHEETING AS DETAILED.



**MESH TO SOLID SHEETING FIXING DETAIL**



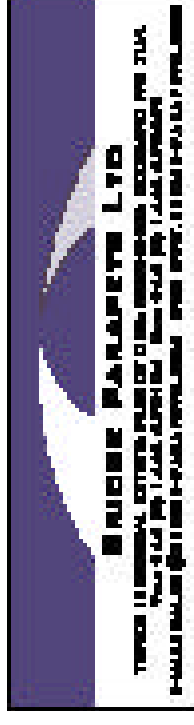
**TYPICAL ELEVATION ON POST**

copyright note: the property of bridge parapets ltd. the contents of this drawing may not be copied or reproduced without written permission from bridge parapets ltd.

**NOTES**

- 1) FOR DRAWING REGISTER SEE DRG. BPL/100/100.
- 2) FOR MATERIAL SPECIFICATION SEE DRG. BPL/100/100.
- 3) FOR FULL DETAILS OF PARAPETS SEE GENERAL ARRANGEMENT DRAWINGS.
- 4) THE POSITION AND EXTENT OF REAR PANELING SHALL BE IN ACCORDANCE WITH THE CURRENT HIGHWAYS AGENCY STANDARDS.
- 5) POP RIVETS TO BE ALUMINIUM 4.8 DIAM OPEN TYPE TUCKER TAP D x REQUIRED LENGTH, OR SIMILAR APPROVED.
- 6) FOR LOWER MESH RAIL JOINT DETAILS SEE DRG. BPL/100/14.

REV.	DATE	AMENDMENT
C	05/12/02	MINOR CORRECTIONS AND CLARIFICATIONS
B	09/05/02	WELDING AMENDED. RAIL AND SPACERS ALTERED. JOINT ALTERED.
A	27/06/01	ISSUED FOR COMMENT



DRAWN	CM	CHECKED	DM
-------	----	---------	----

DATE	27/06/01	SCALE	VARIES
------	----------	-------	--------

TITLE  
**PART SOLID PART MESH INFILL DETAILS:**  
 L/1.80/m.w.

DRAWING NUMBER  
**BPL/100/13**