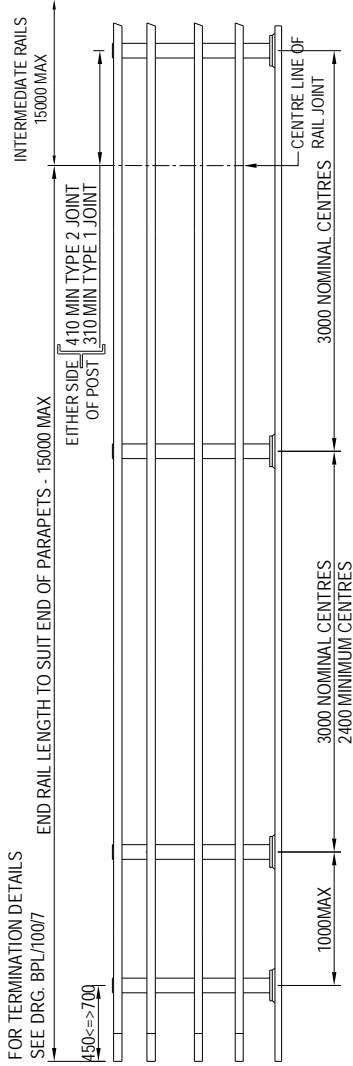
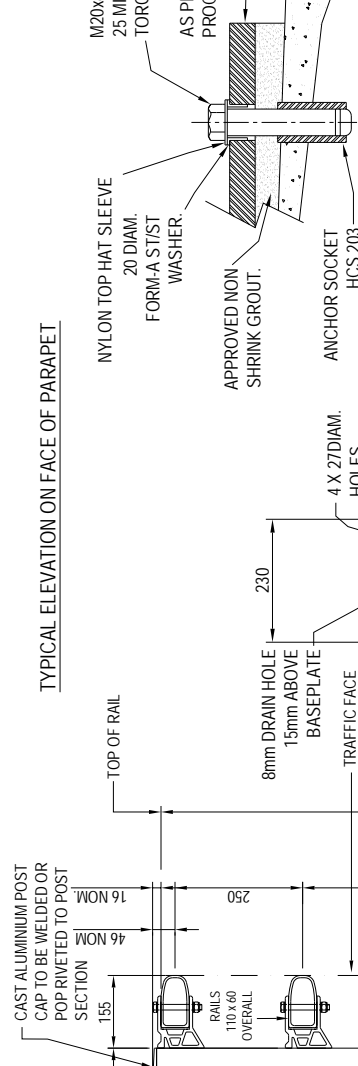


SYSTEM & COMPONENTS ARE COVERED BY DESIGN REGISTRATION & PATENT APPLICATIONS.

FOR TERMINATION DETAILS
SEE DRG. BPL/1007

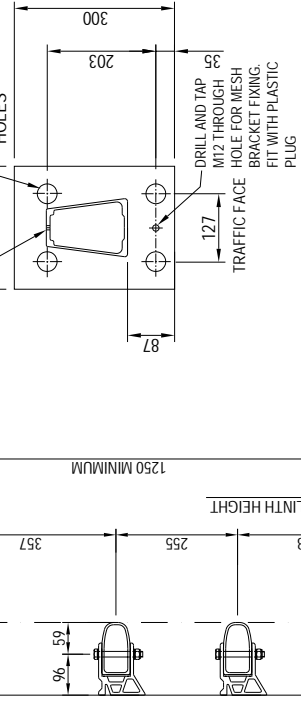


CAST ALUMINIUM POST
CAP TO BE WELDED OR
POP RIVETED TO POST



TYPICAL ELEVATION ON FACE OF PARAPET

HOLDING DOWN BOLT INFORMATION - SCALE 1:4



BASEPLATE DETAIL - SCALE 1:10

BS6779 AND BS EN 1317 PARTS 1 & 2	
ULTIMATE UNFACTORED DESIGN MOMENT OF RESISTANCE OF POST AT UNDERSIDE OF BASE (kNm)	= 28.07
CO-EXISTENT SHEAR (kN)	= 49.24
ULTIMATE SHEAR FORCE RESISTANCE OF POST (kN)	= 128
BS EN 1317 PARTS 1 & 2	
TEST DESIGNATION	= TB32 + TB11
CONTAINMENT LEVEL	= N2
WORKING WIDTH RANKING	= W4
IMPACT SEVERITY LEVEL	= A

DESIGNED AND TESTED TO MEET THE
REQUIREMENTS OF EN 1317 PARTS 1 & 2, & BS6779 PART 1

HAPAS APPROVED HCS 203 CAST
IN ANCHOR DRG. HCS 203 A
CERTIFICATE No.: 98/H018
OR SIMILAR APPROVED CAST
IN OR DRILLED ANCHOR.

PARAPET SECTION

copyright note: the property of bridge parapets Ltd. the contents of this drawing may not be copied or reproduced without written permission from bridge parapets Ltd.

NOTES

- 1) ALL MATERIALS AND WELDING SHALL COMPLY WITH THE RELEVANT STANDARDS.
- 2) UNDERSIDE OF BASEPLATE TO BE GIVEN 2 COATS OF FACTORY APPLIED BITUMASTIC PAINT TO BS 3416.
- 3) IDENTIFICATION PLATES TO BE ATTACHED TO MANUFACTURERS SPECIFICATION.
- 4) ALL BOLTS AND NUTS TO A4 CLASS 80 STAINLESS STEEL TO CURRENT BS/EN STANDARDS.
- 5) FOR DRG.S LIST SEE DRG. BPL/100/100.
- 6) FOR INFILL DETAILS SEE DRG. BPL/100/9-10-11.
- 7) ALL ALUMINIUM EXTRUSIONS TO BE 6082-T6.
- 8) RAILS CAN BE CURVED TO SUIT SPECIFIC APPLICATIONS.

REV.	DATE	AMENDMENT
F	20/02/07	MINOR UPDATES.
E	04/12/02	ALIBED IN ACCORDANCE WITH 12/11/02 MEMO
D	09/04/02	RAILS AND SPACERS ALTERED. JOINT ALTERED.
C	27/09/01	JOINT AMENDED
B	12/06/01	AMENDED TO TAKE ACCOUNT OF COMMENTS
A	02/06/01	ISSUED FOR COMMENT

BRIDGE PARAPETS LTD
 TONICH INDUSTRIAL ESTATE, MAIR OF DRG, ROBEYSHIRE, SCOTLAND IV6 7UA
 TEL: +44 (0) 1463 870194 FAX: +44 (0) 1463 870667
 E-MAIL: SALES@BRIDGE-PARAPETS.COM WEB: WWW.BRIDGE-PARAPETS.COM

DRAWN	CHECKED
CM	DM

DATE	SCALE
28/05/01	AS NOTED FOR A3

TITLE
GENERAL ARRANGEMENT OF: BPL SERIES 120 ALUMINIUM PARAPET 121(N/1.25/b) 122(N/1.25/B) 123(N/1.25/M)

DRAWING NUMBER
BPL/100/2