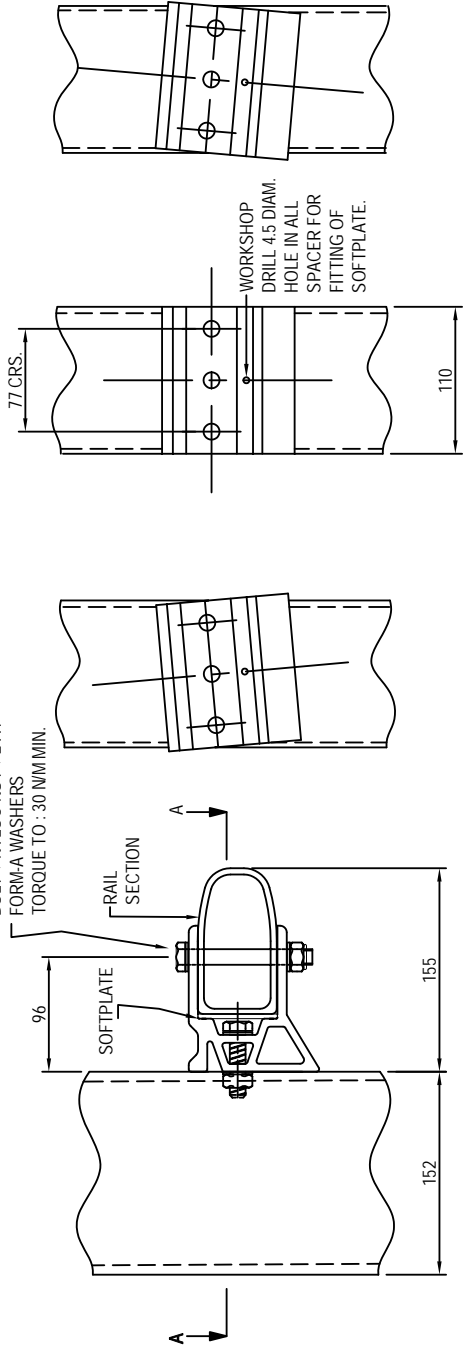


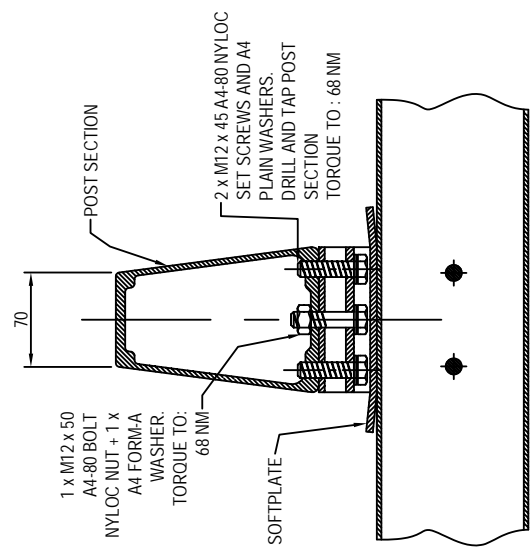
SYSTEM & COMPONENTS ARE COVERED BY DESIGN REGISTRATION & PATENT APPLICATIONS.

2 x M12 x 100 A4-80
BOLT + NYLOC NUT + 2 A4
FORM-A WASHERS
TORQUE TO : 30 NM MIN.



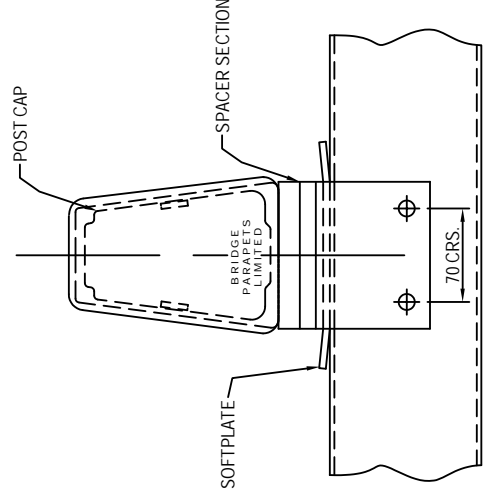
FRONT VIEWS
RAIL/POST BRACKETS ANGLED TO SUIT
GRADIENT AND CURVATURE OF BRIDGE
(RAILS AND SOFTPLATES OMITTED FOR CLARITY)

SIDE VIEW



SECTION 'A-A'

PLAN ON ASSEMBLY
WITH POST CAP FITTED



copyright note: the property of bridge parapets Ltd. the drawings and drawings are not to be copied, reproduced or used in any way without the written permission from bridge parapets Ltd.

NOTES

- 1) FOR DRAWING LIST SEE DRG. BPL/100/100.
- 2) SPACERS CAN BE HORIZONTAL OR ANGLED EITHER IN SHOP OR ON SITE TO SUIT SITE GRADIENTS.
- 3) SOFTPLATES SECURED WITH 10g. CSK. STAINLESS STEEL SELF TAPPING SCREW.

D	02/10/06	SPACER TO RAIL TORQUE REFERENCE WAS 68NM/M NOW 30NM/M MIN.
C	04/12/02	MINOR CORRECTIONS & CLARIFICATIONS.
B	12/06/01	RAIL AND SPACER ALTERED. SOFTPLATE ADDED, HOLE CENTERS ALTERED.
A	02/06/01	ISSUED FOR COMMENT
REV.	DATE	AMENDMENT

BRIDGE PARAPETS LTD
 TOMICH INDUSTRIAL ESTATE, MILL DR DRA, ROBERSHAW, SCOTLAND IV6 7LJ
 TEL: +44 (0) 1463 870194 FAX: +44 (0) 1463 870667
 E-MAIL: SALES@BRIDGE-PARAPETS.COM WEB: WWW.BRIDGE-PARAPETS.COM

DRAWN	CHECKED
CM	DM

DATE	SCALE
08/05/01	1:4 ON A3

TITLE
SPACER TO POST AND RAIL CONNECTION DETAILS

DRAWING NUMBER
BPL/100/6