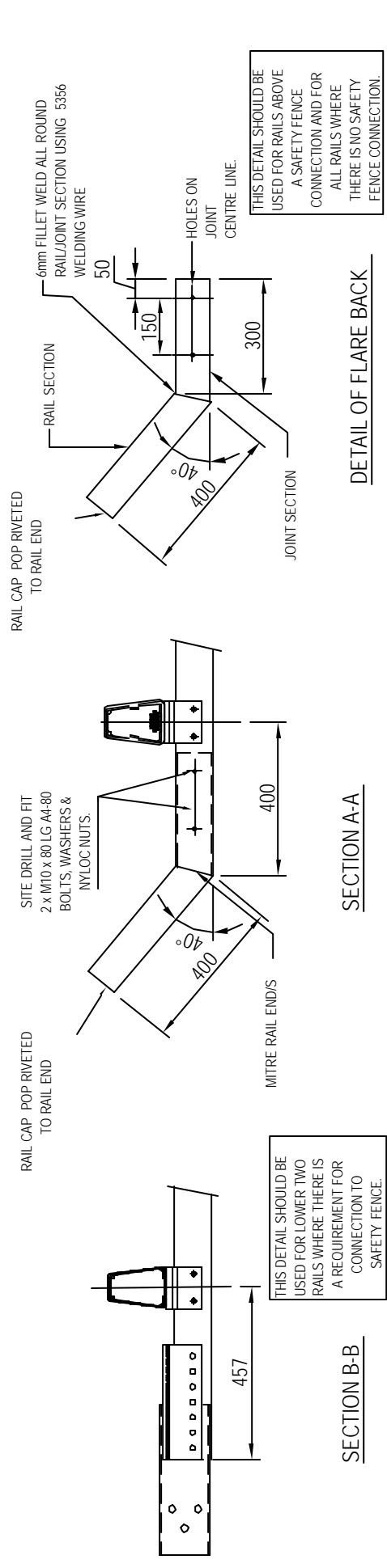
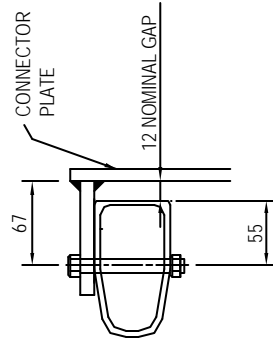


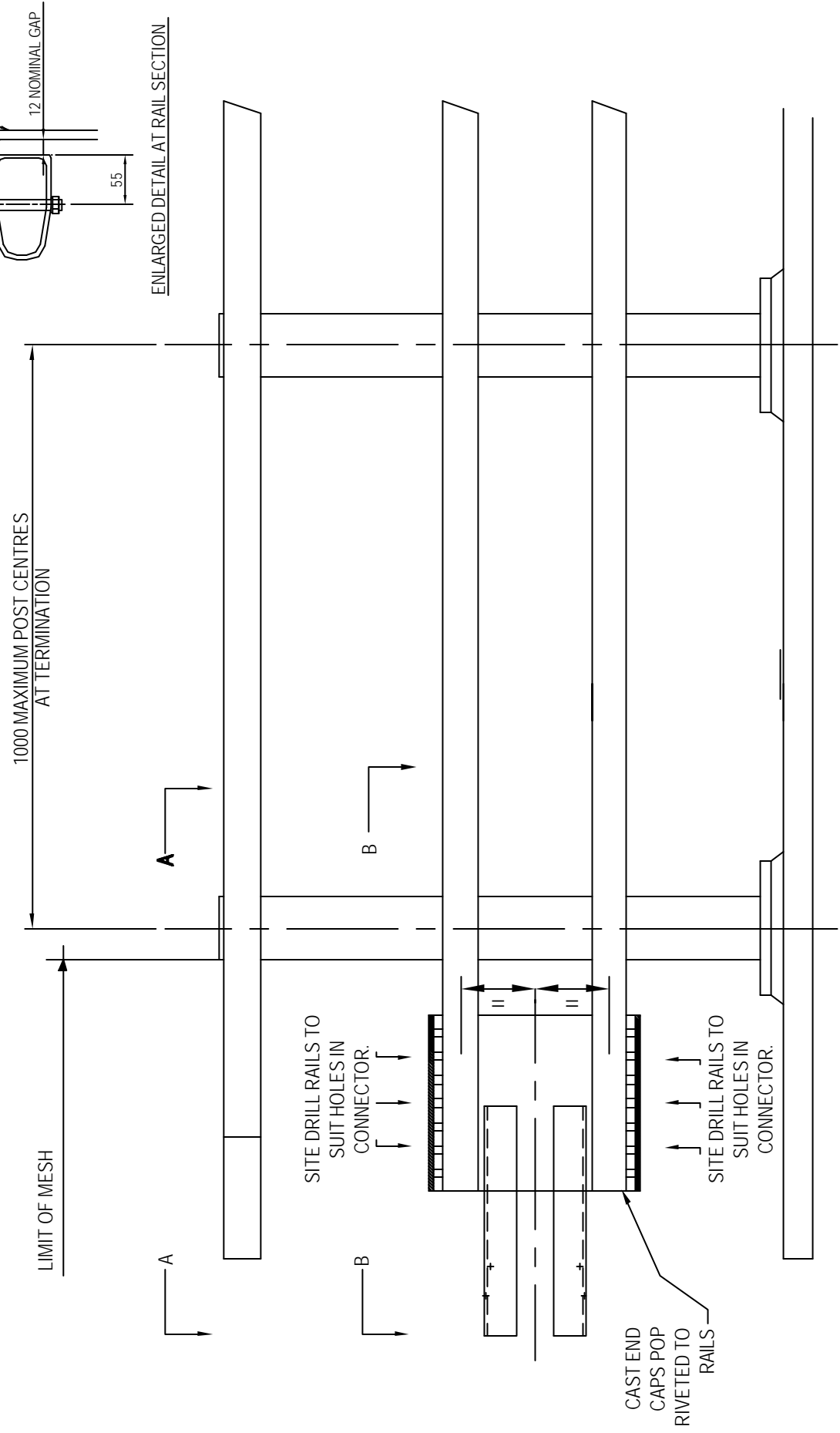
**SYSTEM & COMPONENTS ARE COVERED BY DESIGN REGISTRATION & PATENT APPLICATIONS.**



ABOVE VIEWS SCALE 1:16



ENLARGED DETAIL AT RAIL SECTION



TYPICAL ELEVATION ON TRAFFIC FACE OF PARAPET - SCALE 1:10

copyright note: this drawing is the property of bridge parapets ltd. the contents of this drawing may not be copied or reproduced without written permission from bridge parapets ltd.

**NOTES**

- 1) FOR DRAWING LIST SEE DRG. BPL/100/100.
- 2) FOR GENERAL NOTES REFER TO GENERAL ARRANGEMENT DRAWINGS.
- 3) FOR DETAILS OF SAFETY FENCE CONNECTOR PIECE REFER TO DRG. BPL/100/59.
- 4) CONNECTION FOR OPEN BOX BEAM SHOWN. CONNECTION PLATE CAN BE ADAPTED TO SUIT R.H.S. SAFETY FENCE AND DOUBLE HEIGHT OPEN BOX BEAM.
- 5) THE CENTRELINE OF THE SAFETY FENCE SHALL BE SLOPED AT A RATE OF 1:100 TO LINE UP WITH THE CENTRELINE OF THE CONNECTING PLATE AT THE END OF THE BRIDGE PARAPET.

REV.	DATE	AMENDMENT
D	04/12/02	MINOR CORRECTIONS AND CLARIFICATIONS
C	10/04/02	RAIL CENTRES ALTERED
B	11/06/01	AMENDED TO TAKE ACCOUNT OF COMMENTS
A	04/06/01	ISSUED FOR COMMENT

**BRIDGE PARAPETS LTD**  
 TOMBIGH INDUSTRIAL ESTATE, MILL OF DING, ROBEYSHIRE, BOTTLELAND IYS 7UA  
 TEL +44 (0) 1453 870194 FAX +44 (0) 1453 870667  
 E-MAIL BALCO@BRIDGE-PARAPETS.DOM WEB WWW.BRIDGE-PARAPETS.DOM

DRAWN CM  
 CHECKED DM

DATE 30/05/01  
 SCALE AS NOTED

TITLE  
 50KN>330KN STRENGTH CONNECTION TO SAFETY FENCES.

DRAWING NUMBER  
**BPL/100/7**