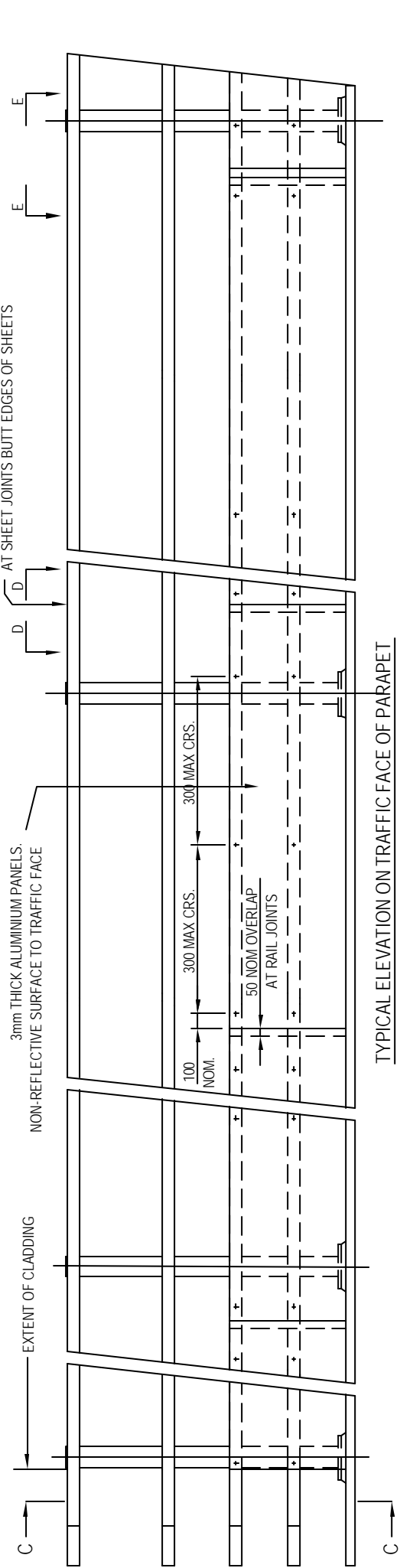
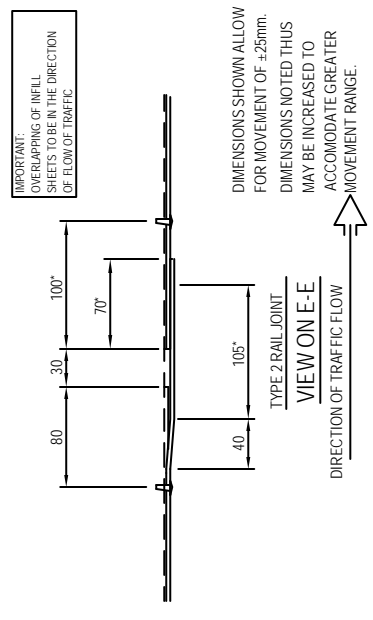
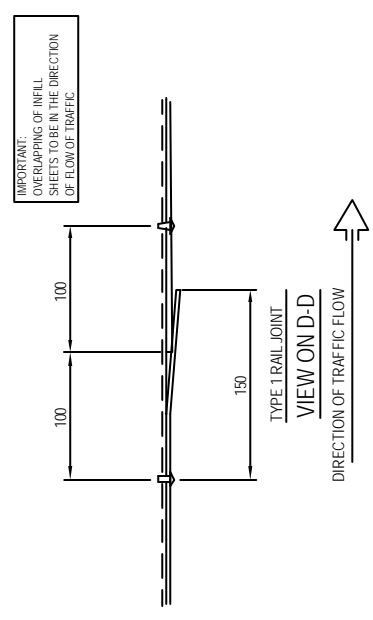


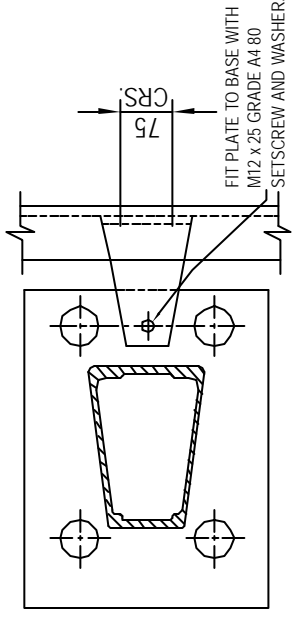
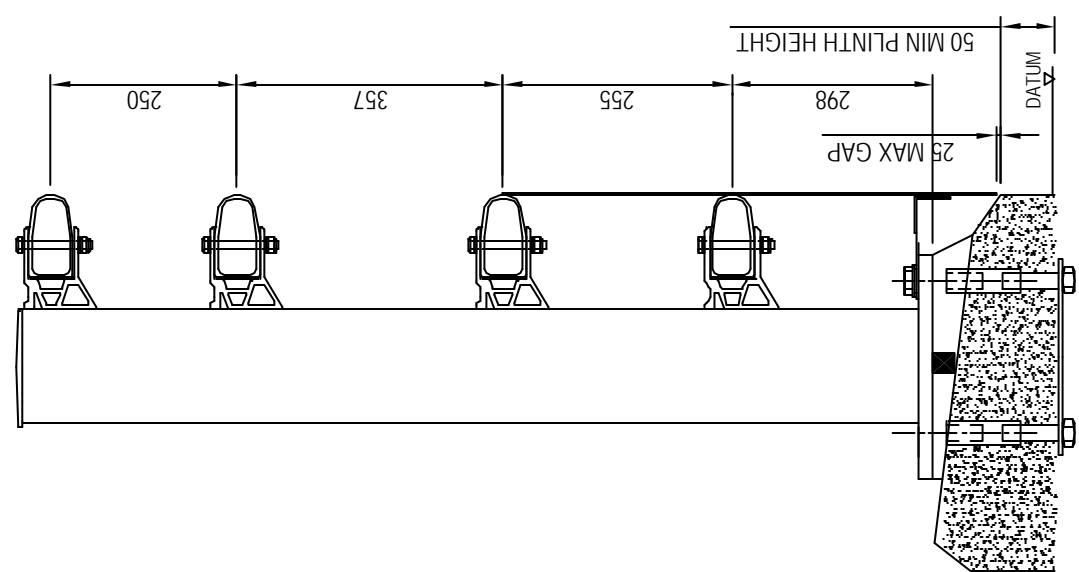
**SYSTEM & COMPONENTS ARE COVERED BY DESIGN REGISTRATION & PATENT APPLICATIONS.**



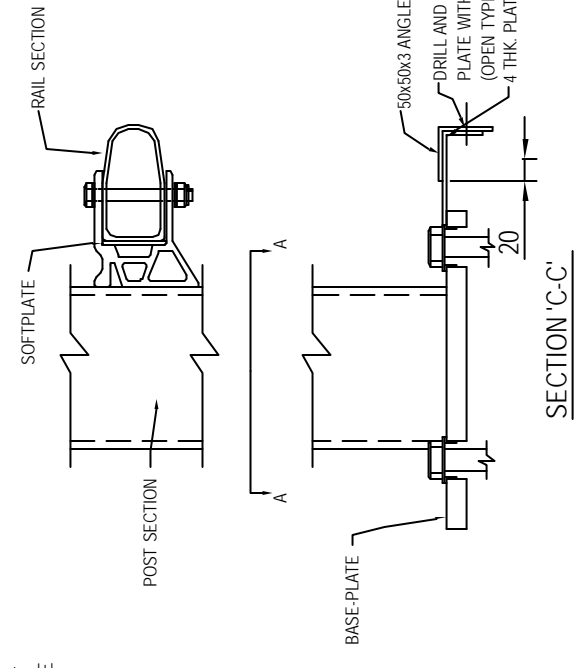
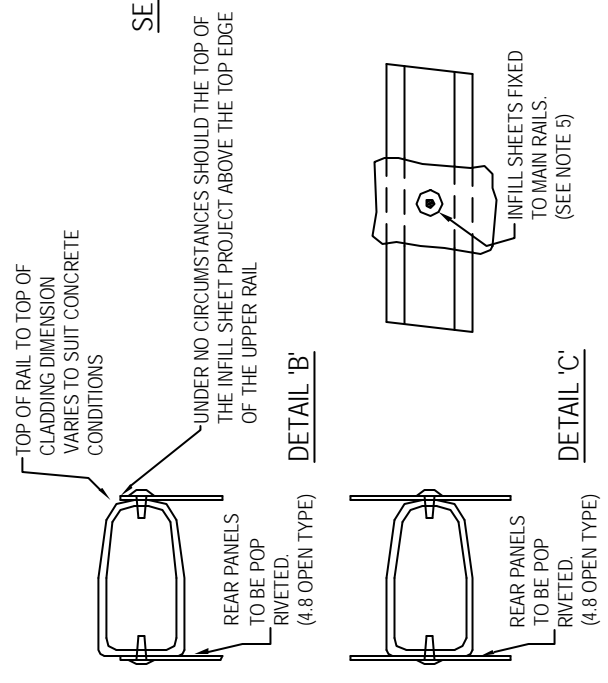
TYPICAL ELEVATION ON TRAFFIC FACE OF PARAPET



DIMENSIONS SHOWN ALLOW FOR MOVEMENT OF  $\pm 25\text{mm}$ . DIMENSIONS NOTED THIS MAY BE INCREASED TO ACCOMMODATE GREATER MOVEMENT RANGE.



SECTION 'A-A' - BOLTS AND WASHERS OMITTED FOR CLARITY



SECTION 'C-C'

copyright note: this drawing is the property of bridge parapets ltd. the contents of this drawing may not be copied or reproduced without written permission from bridge parapets ltd.

**NOTES**

- 1) FOR DRAWING LIST SEE DRG. BPL/100/100.
- 2) FOR MATERIAL SPECIFICATION SEE DRG. BPL/100/100.
- 3) FOR FULL DETAILS OF PARAPETS SEE GENERAL ARRANGEMENT DRAWINGS.
- 4) THE POSITION AND EXTENT OF PANELS SHALL BE IN ACCORDANCE WITH THE CURRENT HIGHWAYS AGENCY STANDARDS.
- 5) FRONT INFILL SHEETS TO BE FIXED TO MAIN RAILS USING SFS TYPE SL-14/12-L12-S16-5.5 x 38 OR SIMILAR STAINLESS SELF DRILL FASTENERS EXCEPT AROUND RAIL JOINTS WHERE 4.8 Ø OPEN TYPE POP RIVETS SHOULD BE USED.
- 6) POP RIVETS TO BE ALUMINIUM 4.8 DIAM OPEN TYPE TUCKER TAP D x REQUIRED LENGTH, OR SIMILAR APPROVED.
- 7) FOR LOWER MESH RAIL JOINT DETAILS SEE DRG. BPL/100/14.

REV.	DATE	AMENDMENT
C	05/12/02	MINOR CORRECTIONS AND CLARIFICATIONS
B	09/05/02	WELDING AMENDED. RAIL AND SPACER SECTION ALTERED.
A	21/06/01	ISSUED FOR COMMENT

**BRIDGE PARAPETS LTD**  
 TONKHAM INDUSTRIAL ESTATE, MAIN ST, ROBEY-EMING, BOSTLAND, IVS 7UA  
 TEL: +44 (0) 1462 876104. FAX: +44 (0) 1462 876067  
 E-MAIL: SALES@BRIDGE-PARAPETS.COM WEB: WWW.BRIDGE-PARAPETS.COM

DRAWN	CHECKED
CM	DM

DATE	SCALE
21/06/01	VARIES

TITLE  
**SOLID PANEL (PART) INFILL DETAILS:**  
 N/1.25/b

DRAWING NUMBER  
**BPL/100/9**