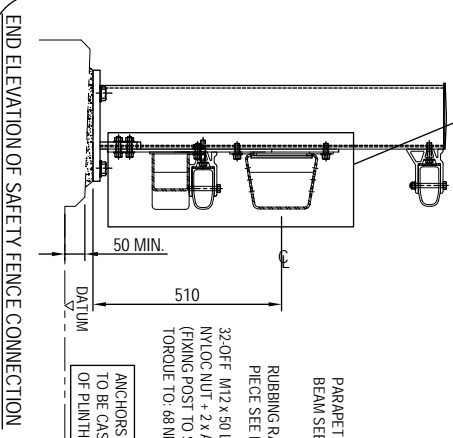
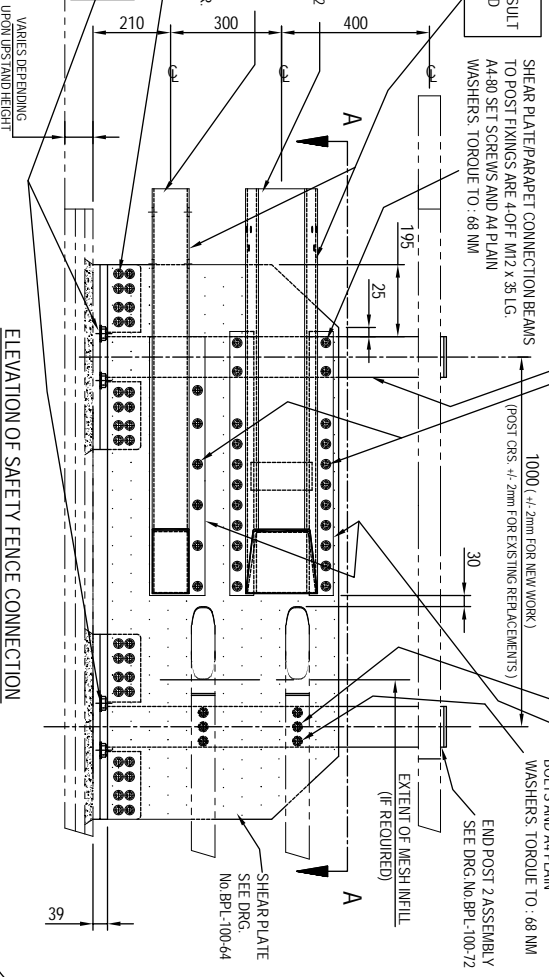


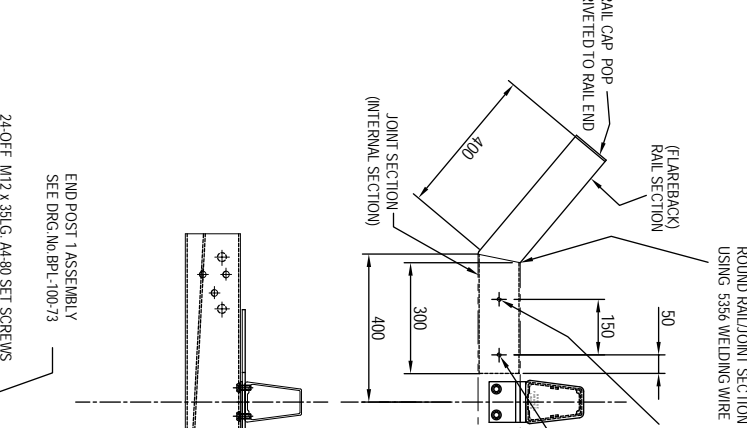
END ELEVATION DETAIL



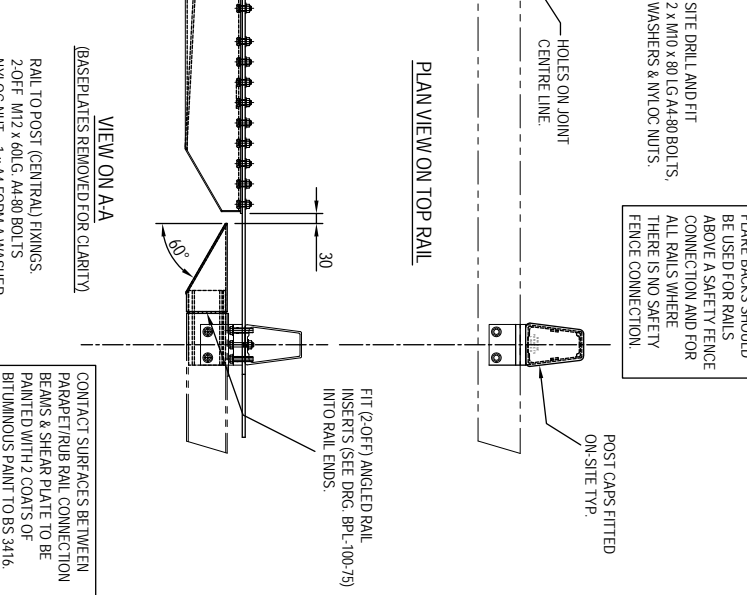
SAFETY FENCE BY OTHERS: FOR TYPICAL DETAILS & LAYOUT CONSULT PROMOTERS & REFER TO -NPSRS-HCD GA140 SERIES DRGS.



ELEVATION OF SAFETY FENCE CONNECTION



VIEW ON A-A



END ELEVATION DETAIL

copyright note: the property of bridge parapets, ltd. the drawings and any parts of them are not to be reproduced without written permission from bridge parapets ltd.

- NOTES**
- 1) THE CENTRELINE OF THE SAFETY FENCE SHALL BE SLOPED AT A RATE OF 1:100 TO LINE UP WITH THE CENTRELINE OF THE CONNECTING PLATE AT THE END OF THE BRIDGE PARAPET (AS PER H.C.D.)
 - 2) SPACERS TO LOWER RAILS (2 POSITIONS) TO BE SITE FITTED. SPACERS TO ALL OTHER RAIL POSITIONS CAN BE SHOP FITTED.
 - 3) IF SAFETY FENCE CONNECTION IS INSTALLED ON A GRADIENT ENSURE POST ANCHORS (BOTH POSTS) ARE CAST 90° TO TOP OF PLINTH.

REV.	DATE	AMENDMENT
A	14/12/06	ISSUED FOR USE
B	19/06/07	ANGLED RAIL INSERT ADDED. ANCHOR NOTE ADDED.
C	04/07/07	M12 x 35 LG. FIXINGS WERE BOLTS NOW SET SCREWS
D	12/07/07	SHEAR PLATE/ PARAPET CONNECTION BEAM FIXINGS WERE 30mm LG. NOW 35mm G. RAIL TO POST (OUTER) FIXINGS WERE 50mm LG. SET SCREWS NOW 60mm LG. BOLTS
E	14/08/07	SHEAR PLATE/ POST BASE FIXINGS WERE 45mm LG. NOW 50mm LG.

BRIDGE PARAPETS LTD

TWITCH INDUSTRIAL SERVICE, MAIN OFF. CDB, 9085-SHIRE, BERTLANDS, 1/6 7/1A
 TEL: +44 (0) 1453 870194 FAX: +44 (0) 1453 870667
 EMAIL: SALES@BRIDGE-PARAPETS.COM WEB: WWW.BRIDGE-PARAPETS.COM

DRAWN	PA	CHECKED	DM
DATE	04/12/06	SCALE	N.T.S.
TITLE	OPEN BOX BEAM SAFETY FENCE CONNECTION [WITH RUB RAIL CONNECTION : BPL 100 SYSTEM] [HCD - GA140]		
DRAWING NUMBER	BPL/100/18		

SYSTEM & COMPONENTS ARE COVERED BY DESIGN REGISTRATION & PATENT APPLICATIONS.