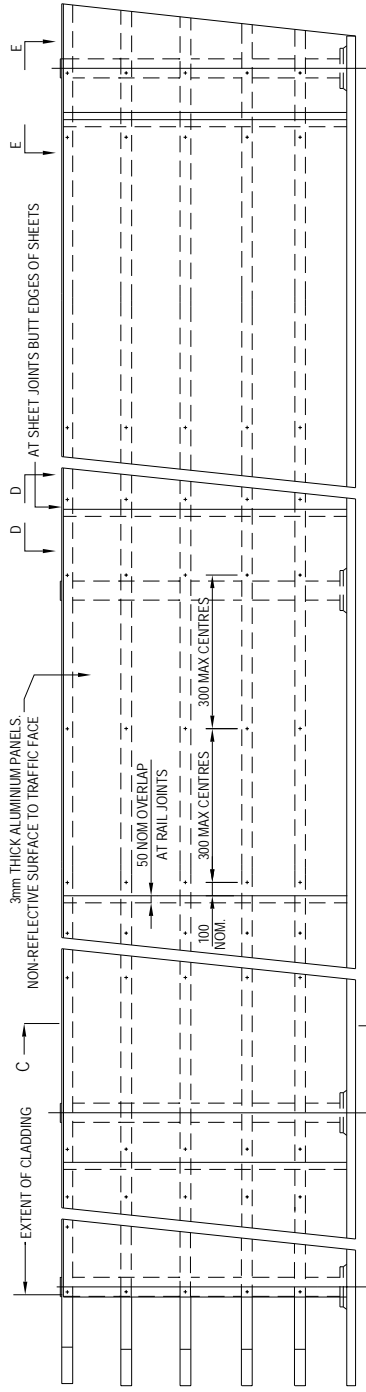
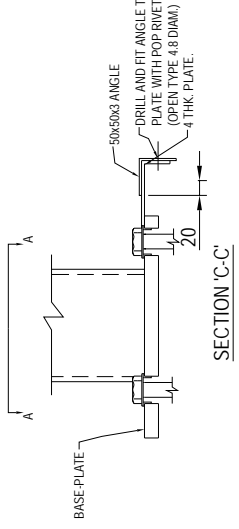
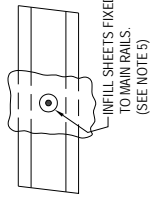
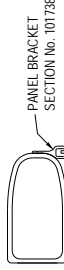
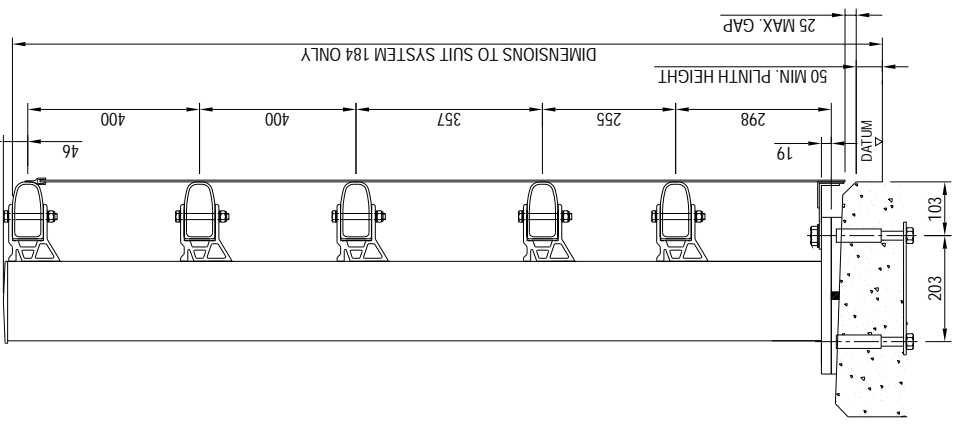


SYSTEM & COMPONENTS ARE COVERED BY DESIGN REGISTRATION & PATENT APPLICATIONS.



TYPICAL ELEVATION ON TRAFFIC FACE OF PARAPET



copyright note: the property of bridge parapets Ltd. the contents of this drawing may not be copied or reproduced without written permission from bridge parapets ltd.

NOTES

- 1) FOR DRAWING LIST SEE DRG. BPL/100/100.
- 2) FOR MATERIAL SPECIFICATION SEE DRG. BPL/100/100.
- 3) FOR FULL DETAILS OF PARAPETS SEE GENERAL ARRANGEMENT DRAWINGS.
- 4) FRONT INFILL SHEETS TO BE FIXED TO MAIN RAILS USING SFS TYPE SL/14/12, L12, S16, S5.5 x 38 OR SIMILAR STAINLESS SELF DRILL FASTENERS EXCEPT AROUND RAIL JOINTS WHERE 4.8Ø OPEN TYPE POP RIVETS SHOULD BE USED.
- 5) INFILL PANELS PROVIDED ARE 3mm ALUMINIUM ROAD SIGN SHEETS PAINTED GREY TO TRAFFIC FACE SIDE OF PARAPET.
- 6) MIN PLINTH WIDTH = 450mm
- 7) POP RIVETS TO BE ALUMINIUM 4.8 DIAM OPEN TYPE TUCKER TAP D X REQUIRED LENGTH, OR SIMILAR APPROVED.
- 8) FOR LOWER MESH RAIL JOINT DETAIL SEE DRG. BPL/100/14.

B	26/11/07	PANEL BRACKET SECT No. 101738 ADDED.
A	16/11/07	ISSUED FOR COMMENT
REV.	DATE	AMENDMENT

**BRIDGE PARAPETS LTD**  
 TOMICH INDUSTRIAL ESTATE, HUIB OF DRG. ROBBERSHIRE, SCOTLAND IV6 7UA  
 TEL: 0144 (0) 1465 870194 FAX: 0144 (0) 1465 870667  
 E-MAIL: SALES@BRIDGE-PARAPETS.COM WEB: WWW.BRIDGE-PARAPETS.COM

DRAWN	PA	CHECKED	BM
DATE	16/11/07	SCALE	VARIES

TITLE  
**SOLID PANEL INFILL DETAILS:  
 N/1.80/SOLID**

DRAWING NUMBER  
**BPL/100/21**