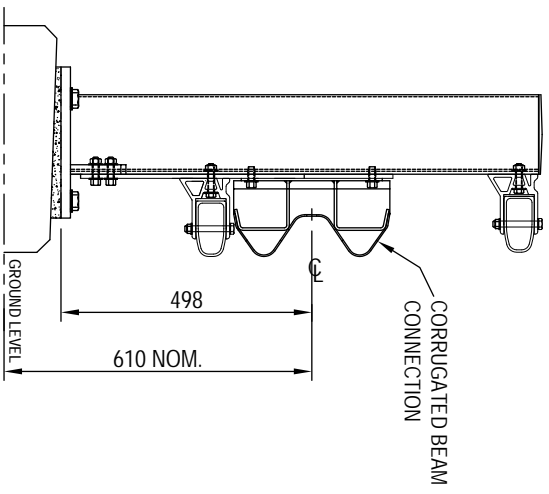


EXTENT OF BPL SUPPLY
 BPL 100 SERIES PARAPET
 N2 PROPRIETARY OR NON PROPRIETARY TENSIONED OR UN-TENSIONED CORRUGATED SAFETY FENCE BY OTHERS.
 LENGTH & CONFIGURATION TO BE DECIDED BY ENGINEER/PROMOTER TO SUIT SITE CONDITIONS/LOCATION.

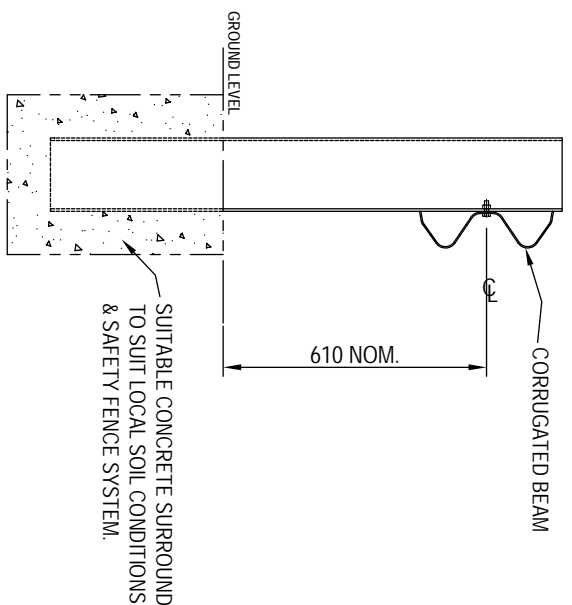
NOTES :-

- 1) THE CENTRELINE OF THE SAFETY FENCE SHALL BE SLOPED AT A RATE OF 1:100 TO LINE UP WITH THE CENTRELINE OF THE CONNECTING PLATE AT THE BRIDGE PARAPET TO COMPLY WITH THE 610mm REQUIREMENT.
- 2) BPL100/N1/N2 ALUMINIUM PARAPET I.S.L. A. SAFETY FENCE CONNECTION/TRANSITION DESIGNED BY CALCULATION TO TRANSFER 330KN LOAD THROUGH SYSTEM TO CONCRETE EDGE BEAM. [SEE BH DESIGN CERTIFICATE].

SECTION THROUGH CONNECTION/PARAPET



SECTION THROUGH CORRUGATED BEAM



		TITLE	
		330KN CORRUGATED BEAM TO BPL-100 ALUMINIUM PARAPET CONNECTION/TRANSITION	
		DRAWING NUMBER	
		BPL-100-27	
		DRAWN	CHECKED
A	14/12/07	PA	DM
REV.	DATE	DATE	SCALE
		13/12/07	NTS
		AMENDMENT	
		ISSUED FOR USE.	
<small> BRIDGE PARAPETS LTD TECHNIC INDUSTRIAL ESTATE, MILL OF CROO, ROSS-SCHEWEL, SCOTLAND IV6 7UA TEL: +44 (0) 1463 870194 FAX: +44 (0) 1463 870667 EMAIL: SALES@BRIDGE-PARAPETS.COM WEB: WWW.BRIDGE-PARAPETS.COM </small>			