

copyright note: the property of bridge parapets Ltd. the contents of this drawing may not be copied or reproduced without written permission from bridge parapets Ltd.

- NOTES**
- 1) FOR DRAWING LIST AND MATERIAL SPECIFICATION SEE DRG. BPL/200/200.
  - 2) FOR FULL DETAILS OF PARAPETS SEE GENERAL ARRANGEMENT DRAWINGS.
  - 3) MESH PANELS ARE TO BE MILD STEEL AND HOT DIP GALVANISED. ANY OTHER SURFACE FINISH TO BE DETERMINED BY THE CONTRACTOR.
  - 4) POP RIVETS TO BE ALUMINIUM Ø 4.8 OPEN TYPE TUCKER TAP D x REQUIRED LENGTH, OR SIMILAR APPROVED.
  - 5) FOR LOWER MESH RAIL JOINT DETAILS SEE DRG. BPL/200/14.

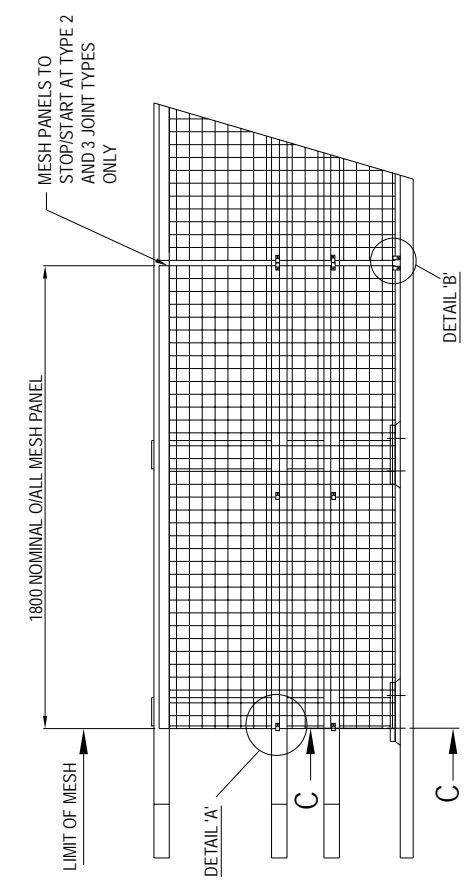
A	27/01/07	ISSUED FOR COMMENT
REV.	DATE	AMENDMENT

**BRIDGE PARAPETS LTD**  
 TORCH INDUSTRIAL ESTATE, MILL OF ORR, ROSSBRIE, SCOTLAND N/6 7UA  
 TEL: +44 (0) 1463 870194 FAX: +44 (0) 1463 870667  
 E-MAIL: SALES@BRIDGE-PARAPETS.COM WEB: WWW.BRIDGE-PARAPETS.COM

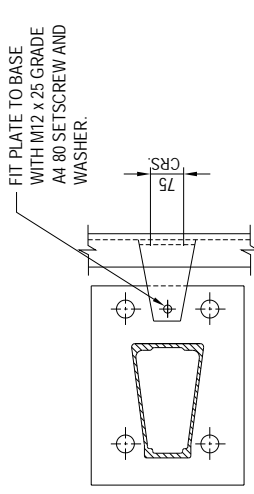
**DRAWN** PA **CHECKED** DM  
**DATE** 26/01/07 **SCALE** N.T.S.

**TITLE**  
 MESH INFILL DETAILS  
 L/1.00/M N/1.00/M  
 (BPL 200 SYSTEM)

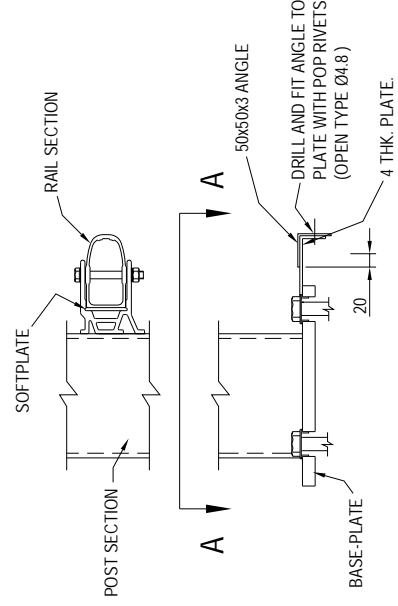
**DRAWING NUMBER**  
 BPL/200/8



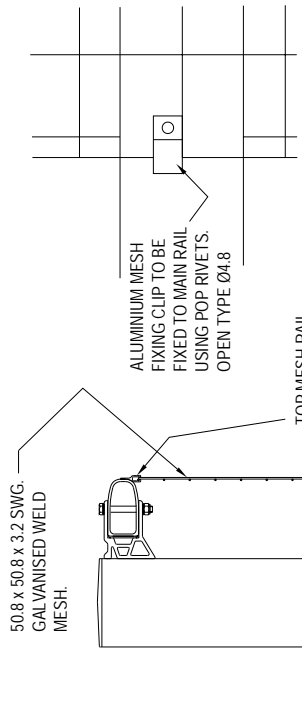
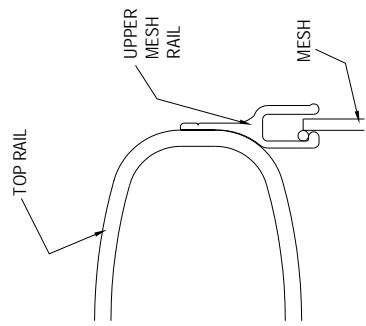
TYPICAL ELEVATION ON TRAFFIC FACE OF PARAPET



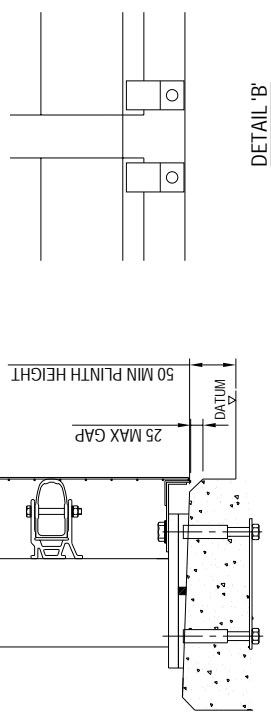
SECTION 'A-A' - BOLTS AND WASHERS OMITTED FOR CLARITY



ENLARGED DETAIL OF UPPER MESH RAIL ATTACHMENT



DETAIL 'A'



TYPICAL SECTION THROUGH PARAPET