

copyright note: the property of bridge parapets Ltd. the contents of this drawing may not be copied or reproduced without written permission from bridge parapets Ltd.

**NOTES**

- 1) FOR DRAWING LIST AND MATERIAL SPECIFICATION SEE DRG. BPL/200/200.
- 2) FOR FULL DETAILS OF PARAPETS SEE GENERAL ARRANGEMENT DRAWINGS.
- 3) THE POSITION AND EXTENT OF PANELS SHALL BE IN ACCORDANCE WITH THE CURRENT HIGHWAYS AGENCY STANDARDS.
- 4) POP RIVETS TO BE ALUMINIUM Ø 4.8 OPEN TYPE TUCKER TAP D x REQUIRED LENGTH, OR SIMILAR APPROVED.
- 5) FOR LOWER MESH RAIL JOINT DETAILS SEE DRG. BPL/100/14.

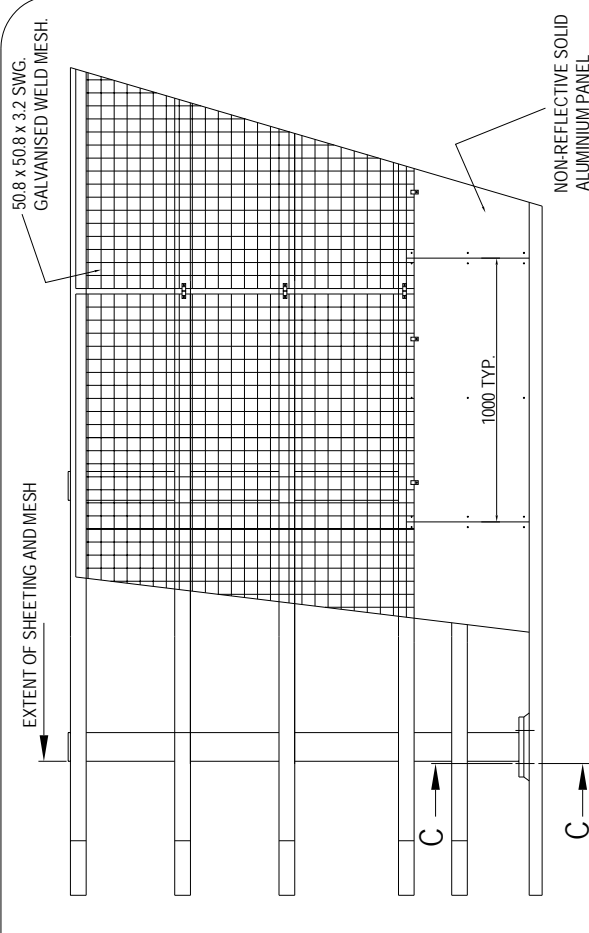
A	08/02/07	ISSUED FOR COMMENT
REV.	DATE	AMENDMENT

**BRIDGE PARAPETS LTD**  
 TONGH INDUSTRIAL ESTATE, NURSERY CRE, ROXBOROUGH, SCOTLAND, IV6 7UA  
 TEL: +44 (0) 1463 870194 FAX: +44 (0) 1463 870667  
 E-MAIL: SALES@BRIDGE-PARAPETS.COM WEB: WWW.BRIDGE-PARAPETS.COM

DRAWN	PA	CHECKED	DM
DATE	07/02/07	SCALE	N.T.S.

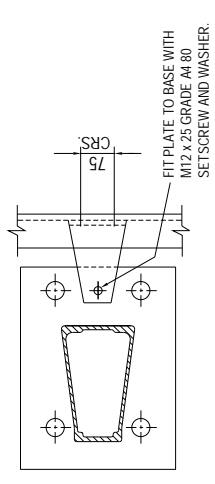
**TITLE**  
 PART SOLID PART MESH INFILL DETAILS :  
 L/1.80m.w.  
 (BPL 200 SYSTEM)

**DRAWING NUMBER**  
 BPL/200/13

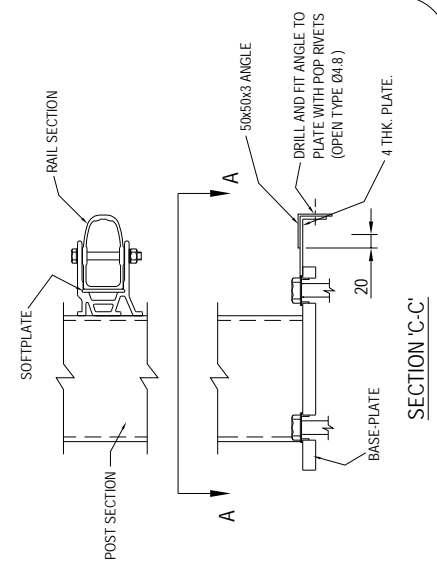


**TYPICAL FRONT ELEVATION ON TRAFFIC FACE**

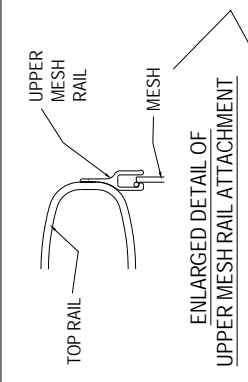
NOTE - FOR GENERAL MESH AND SOLID INFILL FIXING DETAILS SEE DRGS. BPL/200/8 AND BPL/200/11.



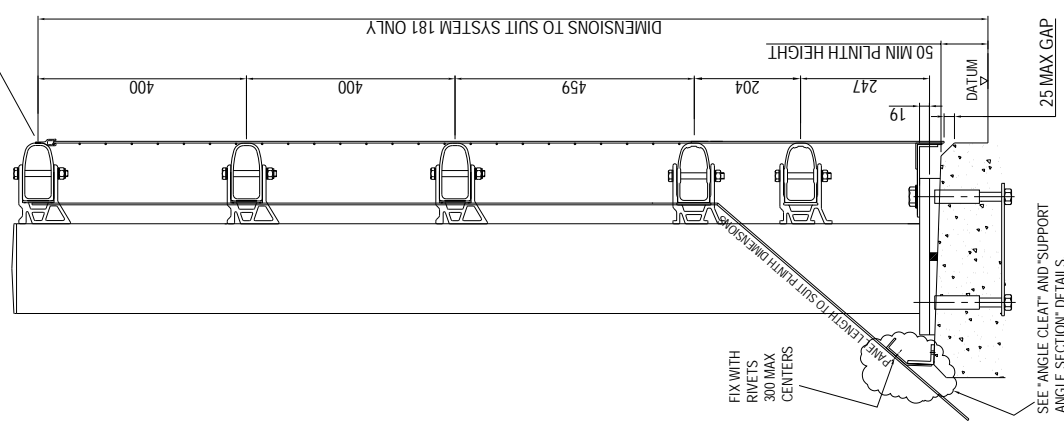
**SECTION 'A-A' - BOLTS AND WASHERS OMITTED FOR CLARITY**



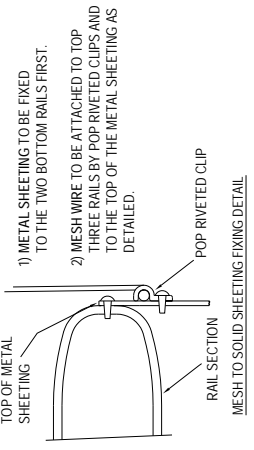
**SECTION 'C-C'**



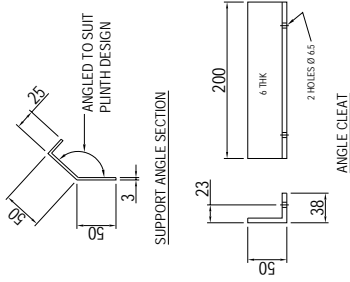
**ENLARGED DETAIL OF UPPER MESH RAIL ATTACHMENT**



**TYPICAL ELEVATION ON POST**



- 1) METAL SHEETING TO BE FIXED TO THE TWO BOTTOM RAILS FIRST.
- 2) MESH WIRE TO BE ATTACHED TO TOP THREE RAILS BY POP RIVETED CLIPS AND TO THE TOP OF THE METAL SHEETING AS DETAILED.



SYSTEM & COMPONENTS ARE COVERED BY DESIGN REGISTRATION & PATENT APPLICATIONS.