

Copyright note: the property of bridge parapets Ltd. the contents of this drawing may not be copied or reproduced without written permission from bridge parapets Ltd.

NOTES

- 1) FOR DRAWING LIST AND MATERIAL SPECIFICATION SEE DRG. BPL/200/200.
- 2) FOR FULL DETAILS OF PARAPETS SEE GENERAL ARRANGEMENT DRAWINGS.
- 3) THE POSITION AND EXTENT OF PANELS SHALL BE IN ACCORDANCE WITH THE CURRENT HIGHWAYS AGENCY STANDARDS.
- 4) FRONT INFILL SHEETS TO BE FIXED TO MAIN RAILS USING SFS TYPE SL-14/12L-12-S-16-5.5 x 38 OR SIMILAR STAINLESS SELF DRILL FASTENERS EXCEPT AROUND RAIL JOINTS WHERE Ø4.8 OPEN TYPE POP RIVETS SHOULD BE USED.
- 5) POP RIVETS TO BE ALUMINIUM Ø 4.8 OPEN TYPE TUCKER TAP D x REQUIRED LENGTH , OR SIMILAR APPROVED.
- 6) FOR LOWER MESH RAIL JOINT DETAILS SEE DRG. BPL/100/14.

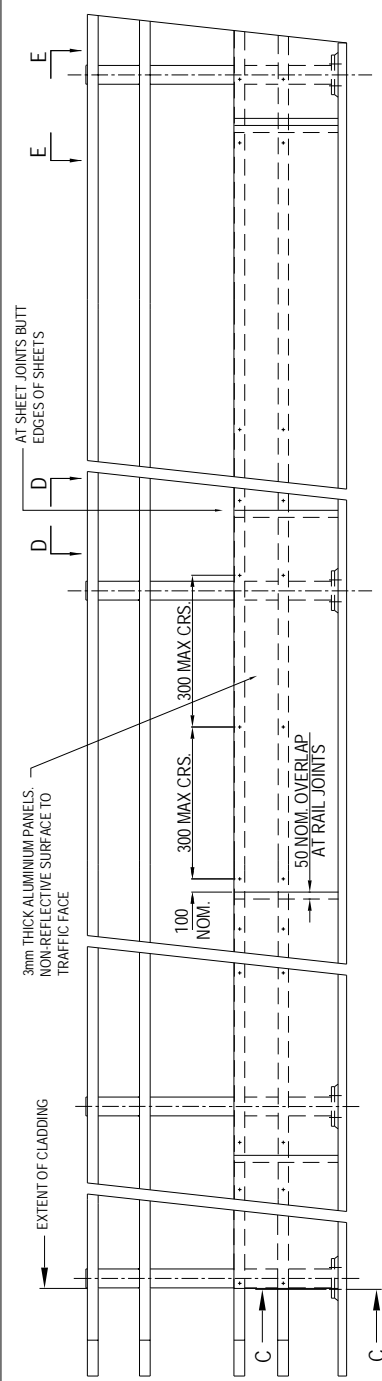
A	31/01/07	ISSUED FOR COMMENT
REV.	DATE	AMENDMENT

BRIDGE PARAPETS LTD
 TORCH INDUSTRIAL ESTATE, NURSERY CRESCENT, BISHOPBRIDGE, SCOTLAND, M6 7JL
 TEL: +44 (0) 1463 870194 FAX: +44 (0) 1463 870667
 E-MAIL: SALES@BRIDGE-PARAPETS.COM WEB: WWW.BRIDGE-PARAPETS.COM

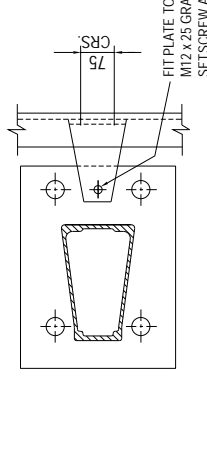
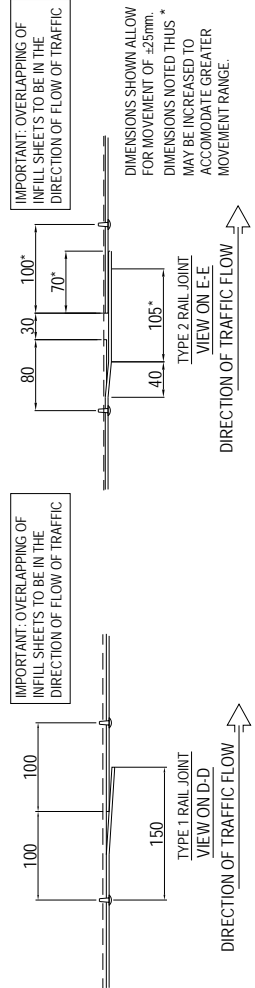
DRAWN	PA	CHECKED	DM
DATE	30/01/07	SCALE	N.T.S.

TITLE
SOLID PANEL (PART) INFILL DETAILS:
 N/1.25/b
 (BPL 200 SYSTEM)

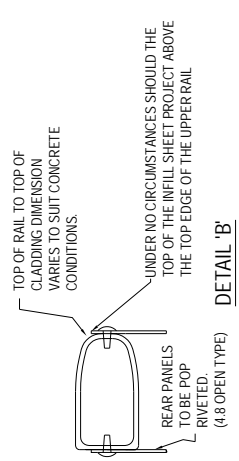
DRAWING NUMBER
BPL/200/19



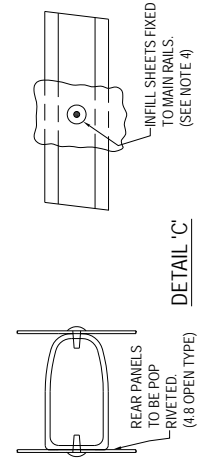
TYPICAL ELEVATION ON TRAFFIC FACE OF PARAPET



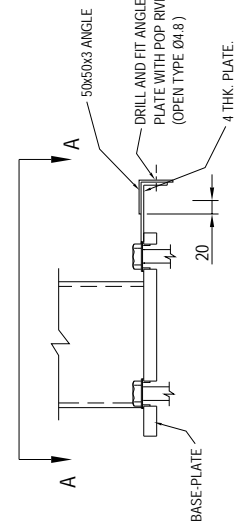
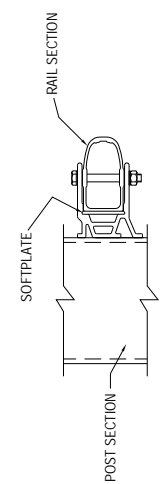
SECTION 'A-A' - BOLTS AND WASHERS OMITTED FOR CLARITY



DETAIL 'B'



DETAIL 'C'



SECTION 'C-C'

